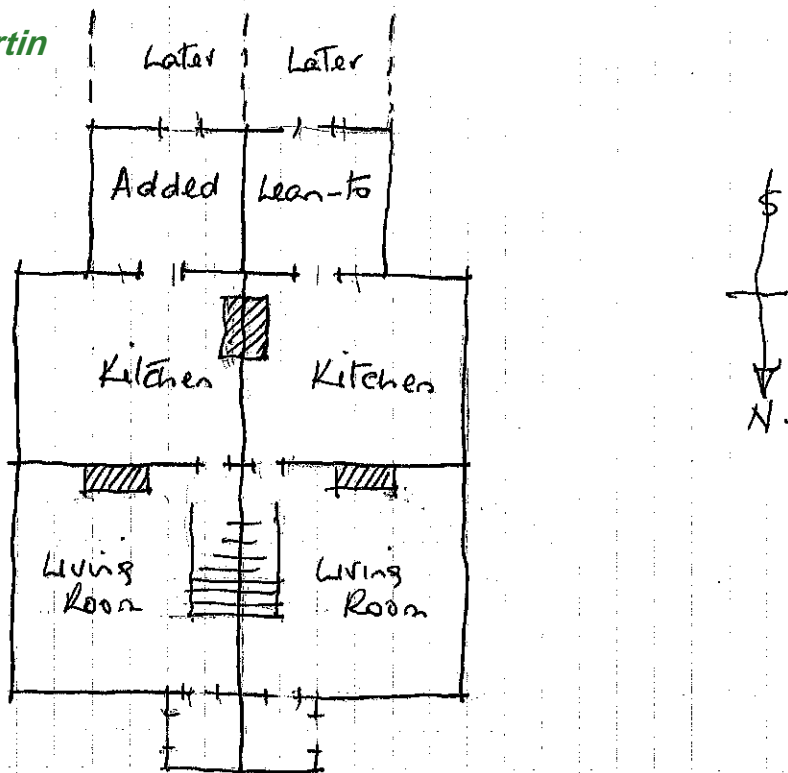


Summary by Caroline Martin  
 Albury History Society  
 alburyhistory.org.uk



A pair of Victorian cottages, c. 1885, replacing an earlier house on the site, two storeys with cellars and attic.

Ground floor of red brick & blue headers, string course of projecting headers, timber framed above with rendered stone infill panels, attic have narrow brick infill. Timber framing at front elaborate, that at sides & back = narrow posts only, possibly for tile or slate vertical hanging as in attic gables. Tiled roof has two parallel ridges, gabled, joined by central ridge at right angles. Heavily carved bargeboards, perhaps by Anthony Browne himself, who built the house using second hand materials. Front chimneys serve living room & one bedroom only. Kitchen chimneys corbelled over to form one externally. Added lean-to's block earlier windows.

Carved plaque on porch, 1636, probably came from earlier house. Ghost in attic of East chennels.

